

S 551 COMPRESSED AIR ANALYZER



The ideal data logger for energy analyzes (ISO 50001) and air audits (ISO 11011)

Features

Easy to use

- Just connect the sensor and start the recording, no configuration and programming required
- Easy operation through color-touch display

Flexible

- Connectable sensors for all required measurement tasks (air flow, air consumption, power consumption, pressure, temperature and many more)
- Up to 24 inputs through extension boxes and Modbus
- Several loggers can be combined: no need to have long cables from the sensor to the logger
- Third party sensors can be easily connected

Safe

- Power glitches and cuts won't effect the performance: battery backup power

Efficient

- S 551 does the job on the site
- Data analyzes in the office
- Price worthy solution
- Full software package includes:
 - S4M-S for basic analyzes
 - CAA for compressed air audit analyzes

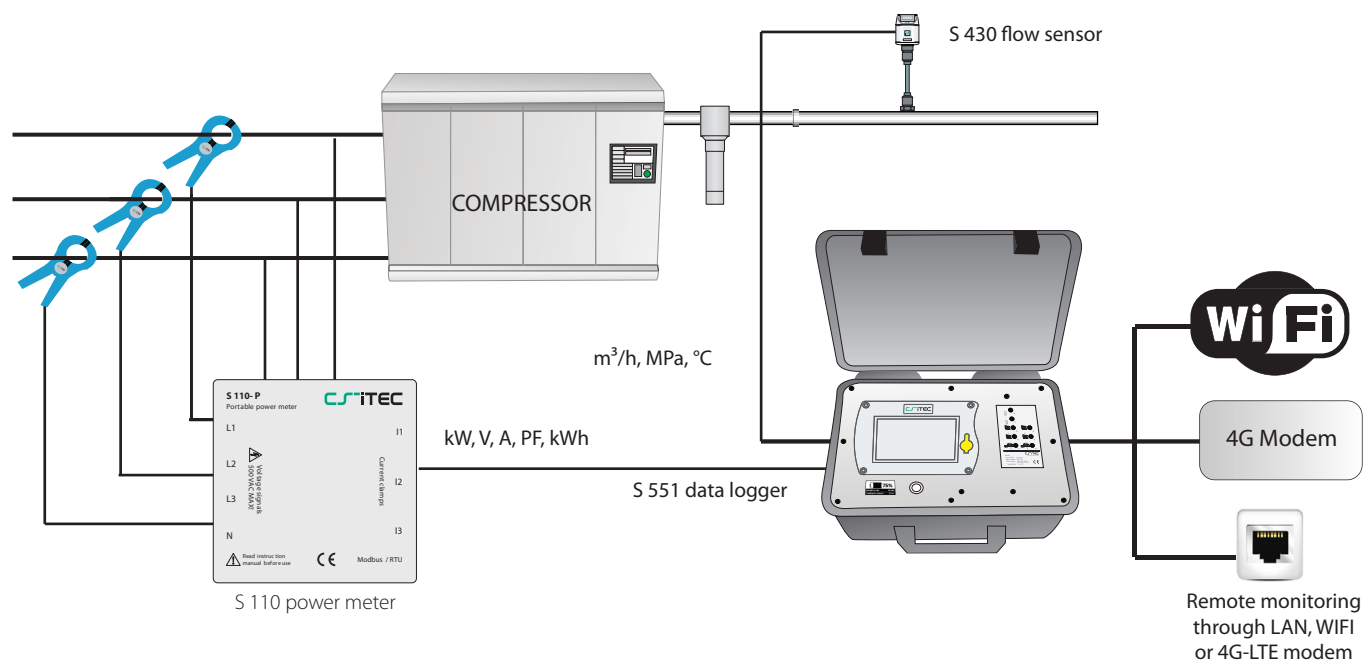


Includes CS-iTEC Compressed Air Analyzer Software

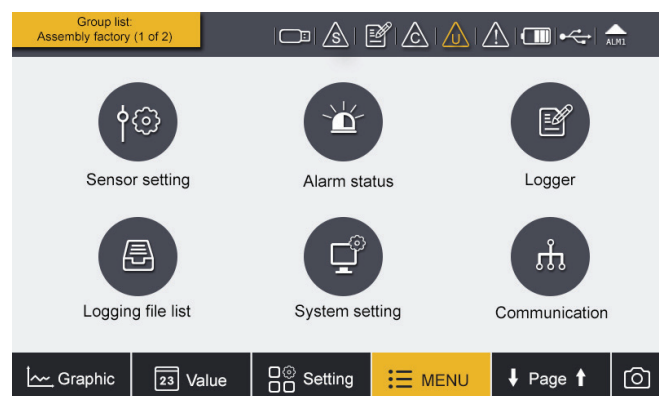


Application

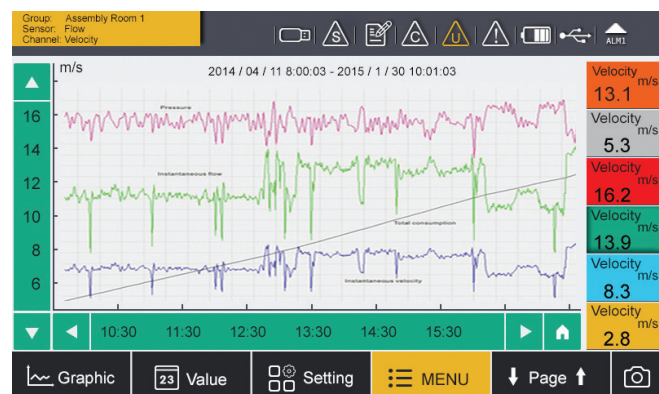
Measurement setup for a data logging on the supply side



Touch screen operation

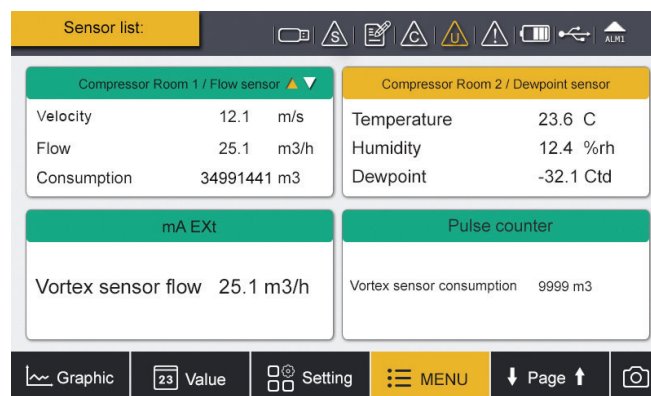


Up to 4 sensors can be viewed on one page and through page scrolling further sensors can be displayed.



S 551 comes with a high resolution 5" colour touch screen interface making the operation as simple as possible.

CS-iTEC intelligent sensors are detected automatically on power-up. With a few settings the data logger is ready for operations with virtually unlimited memory size.



On-site graphic analyzes where channels can be selected as required help to identify certain problems immediately.

For a detailed analyzes we recommend using our software S4M-S, CAA or S4M-XL.

S 551 COMPRESSED AIR ANALYZER

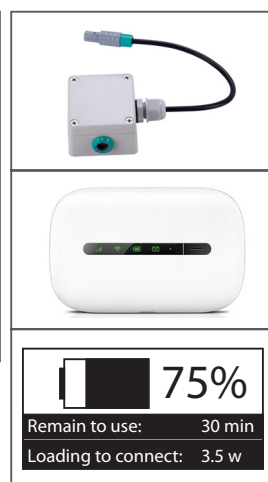
CS-iTEC



Ethernet port



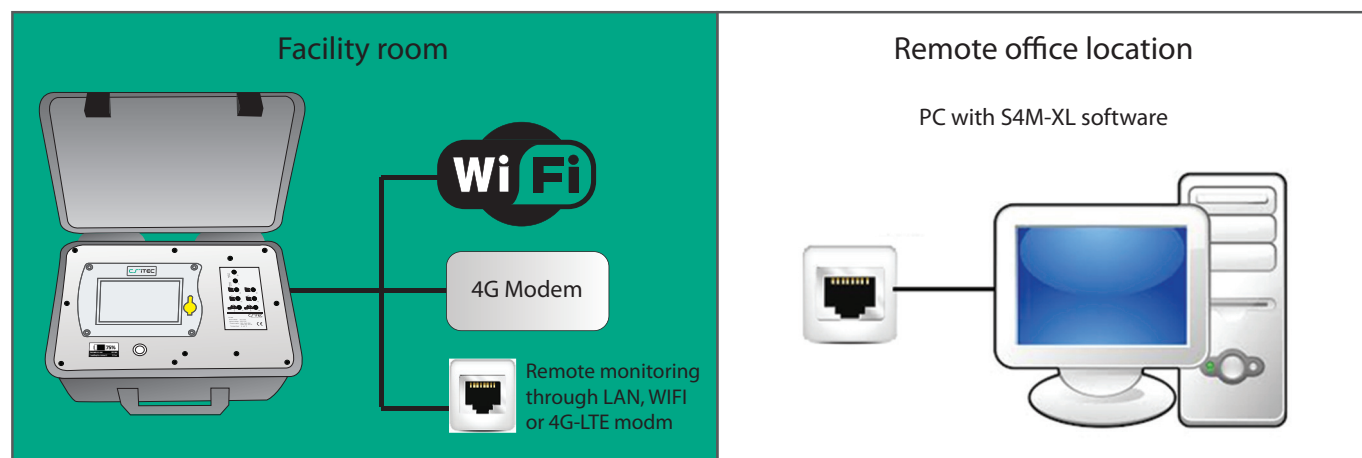
Sensor connection through 5 pole locking connectors and mains connector



Battery gauge indicating remaining battery power and life time

Touch screen operation

S 551 is capable sending measurement data and status information to a remote server through internet. This allows the monitoring of the system remotely by the user. The illustration below shows the principle setup.



Data Analyzes with Compressed Air Analyzer



The screenshot shows the CS-iTEC software S4M-S interface, specifically the Compressor settings window. It includes fields for Select current channel (Compressor 3), Assign flow channel (None), Type of compressor (Load/Unload), Compressor description (Compressor 3), Air delivery (20 m³/min), Full load (184.4), Unload (101.4), Stop (10.1), Supply voltage (400.0 V), and Cost Settings (Energy costs per kWh: 0.10, 0.15, 0.20). There is also a table for Measurement channels.

Description	Status	Select
1: Compressor 1	OK	<input type="checkbox"/>
2: Compressor 2	OK	<input type="checkbox"/>
3: Compressor 3	OK	<input type="checkbox"/>

Through the CS-iTEC software S4M-S the recordings are downloaded to the PC via USB or Ethernet port. The basic analyzes can be done in S4M-S.

For more sophisticated compressor analyzes the CAA software offers many features such as: performance statistics of compressors (efficiency, air delivery, load/unload cycles), leakage analyzes, report generation and more. Comparisons with base line measurements from last year or last month help to identify system changes.

Order information



Data logger

- P560 5100 S 551-P4, portable data recorder, 4 digital input channels, power cord, USB cable, S4M-S software, CAA software
- P560 5101 S 551-P6, portable data recorder, 4 digital input channels and 2 analog, power cord, USB cable, S4M-S software, CAA software



Flow sensors

- S601 0401 S 401-M, insertion type flow sensor, DN15 ... DN300, 5m cable with connector
- S601 0430 S 430 pitot tube flow sensor, DN25 ... DN250, 220 mm shaft, SDI, Modbus/RTU, 5 m cable with connector



Dew point sensor

- S601 0215 S 215 dew point sensor, -20 °Ctd ... +50 °Ctd, measuring chamber, 5 m cable with connector
- S601 0212 S 212 dew point sensor, -50 °Ctd ... +20 °Ctd, measuring chamber, 5 m cable with connector
- S601 0220 S 220 dew point sensor, -100 °Ctd ... 0 °Ctd, measuring chamber, 5 m cable with connector



Pressure sensors

- S694 1886 Pressure sensor, 0 ... 1.6 MPa(g), 5m cable with connector for S 551
- S694 0356 Pressure sensor, 0 ... 4.0 MPa(g), 5m cable with connector for S 551



Amp sensor

- S554 0056 CS-iTEC MiniFLEX 1000, 1000A, 100 mm diameter, including connector to S 551



Temperature sensor

- S693 0005 Temperature transmitter, -50 °C ... +200 °C, 4 ... 20 mA loop powered, 6 x 150 mm sensor tube, 5 m cable with connector
- A554 6003 Compression fitting, 6 mm, G 1/2" thread, 0.6 MPa
- A554 6004 Compression fitting, 6 mm, G 1/2" thread, 1.6 MPa



Power meter

- P554 0034 Portable power meter S 110-P, Modbus/RTU, including 4 test leads, 4 test clips, 5 m cable with connector to S 551
- S554 0061 **For consumption up to 138 kW *)**
Current clamp sensor, 1.8 m cable, 200/1 A, connectable to S 110-P (1 pieces)
- S554 0062 **For consumption up to 346 kW *)**
Current clamp sensor, 1.8 m cable, 500/1 A, connectable to S 110-P (1 piece)
- S554 0063 **For consumption up to 693 kW *)**
Current clamp sensor, 1.8 m cable, 1000/1 A, connectable to S 110-P (1 piece)

Note: For 3 phases power supply 3 current clamp sensors are needed.
*) at 400 VAC

S 551 COMPRESSED AIR ANALYZER



Data logger

P554 0066 Power meter S 110-P2 for S 551, single phase, Modbus/RTU, including 2 test leads, 2 test clips, 5 m cable to S 551

S554 0065 Current clamp sensor, 2 m cable, 20 A / 20 mA, connectable to S 110-P2

Liquid flow meter (clamp on ultra sound)

P554 0070 Ultrasonic controller for liquid flow sensor, connectable to S 551, including 5 m connection cable to S 551 and to the sensors

S694 4603 Ultra sound sensor pair, DN32 ... DN100, socket terminals

S694 4604 Ultra sound sensor pair, DN100 ... DN700, socket terminals

S694 4605 Ultra sound sensor pair, DN300 ... DN6000, socket terminals

S604 0107 Temperature sensor, Pt100, 3-wire, clamp on sensor for pipes, including stretcher. (2 sensors required for energy calculation)

Other sensors / extensions

P554 0080 8 channel analog input extension, connectable to S 551, including 5 m cable with connector

A554 3314 Portable Modbus splitter box, with M12 connector

Accessories

A553 0103 Extension cable, 5m, male-female connectors

A553 0110 Open wires cable, 5m cable with connector

A553 0111 Sensor cable, M12, 5m with connector to S 551

A554 0035 Transport case S 551 for sensors and cables, L560 x W450 x H160 mm (internal compartment can be arranged according to your sensor requirements individually)

A554 0036 Transport case, customized for 1 x S 110-P, 3 x current clamp sensors, 4 x test leads and clips and 1 x S 430

* Please contact us for further accessories and details.